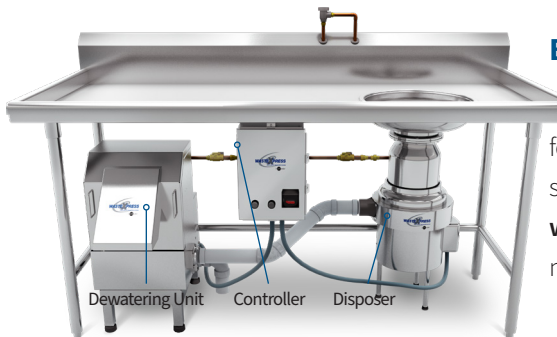




Quick & Easy Steps to WasteXpress® Installation

See Installation, Care & Use Manual for important cautions, warnings and dangers.



Before beginning:

This is a quick reference guide. Please refer to the complete Installation, Care & Use Manual for specifics including warnings, cautions and dangers. If after reading the troubleshooting section, you still have questions about parts, installation or warranty, please visit www.insinkerator.com/foodservice or call **1-800-845-8345**. Please have the model and serial number of your WasteXpress® Disposer, Dewatering Unit, and Controller when calling.

1 Check Components

Verify that all components are the same voltage and phase as your main power supply.

2 Install Disposer

Install disposer as described in your installation manual.

3 Install Dewatering Unit

Position dewatering unit within 10 feet of disposer. Ensure chute is accessible for easy cleaning.

4 Plumb

- A. Install solenoid valves using **COLD** water supply for disposer.
- B. Complete plumbing to sink or trough per local codes.
- C. Install solenoid valve using **HOT** water supply to the dewatering unit.
- D. Connect disposer to dewatering unit inlet. Ensure waste connection length is a maximum of 10 ft (3.05 m), has a minimum slope run of 1/4" drop/1 ft (6.35 mm drop/0.3 m), and does not have more than four (4) 90° elbows (45° preferred).
- E. Connect drain to dewatering unit waste outlet per local codes.

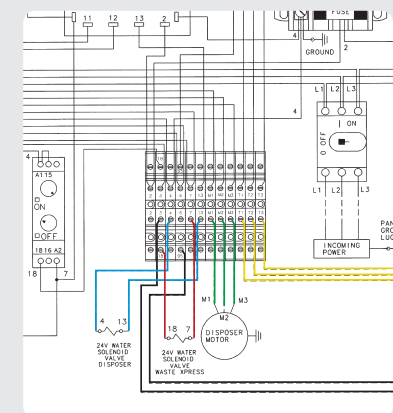
5 Electric

- A. Install controller as described in your installation manual.
- B. Make solenoid and magnetic interlock connections inside controller per installation manual.
- C. Connect the disposer, dewatering unit and controller together per installation manual.
- D. Connect main power supply to controller per installation manual and local codes.

6 Verify Install

CAUTION: Improper wiring can cause reverse auger rotation.

See wiring illustration below and details on back to ensure that the auger rotates in the proper direction.



Wiring details on back. >>



Cold Water Solenoid Valve plumbed to Disposer



Hot Water Solenoid Valve plumbed to Dewatering Unit



Controller

Wiring Installation Details



CAUTION: Improper wiring can cause reverse auger rotation.

To prevent improper installation:

- Ensure auger is rotating clockwise when viewed from above.
- Ensure hot water solenoid is wired with dewatering unit.
- Ensure cold water solenoid is wired with disposer.

Refer to the ICU for more detailed instructions, or to view an entire wiring diagram.

