



# **INSTANT WARM HANDWASH SYSTEM**

## **Installation, Care & Use Manual**



Please be certain that the person who installs or uses this appliance carefully reads and understands the Safety Instructions contained in this manual.

## Introduction

The InSinkErator Instant Warm Handwash System provides at least 40 twenty-second, instantly warm handwashes at 100°F (38°C) per hour,\* with a touchless faucet. (see Figure 1 for typical installation).

Important – these installation instructions are for the benefit of the installing contractor. For technical information not covered in these instructions, contact InSinkErator Foodservice Sales and Service at 1-800-845-8345.

### BEFORE YOU BEGIN

- For your satisfaction and safety, read all instructions, WARNINGS, CAUTIONS and NOTICES including Important Safety Information section, before installing or using this Instant Warm Handwash System.
- This product contains stainless steel. The manufacturer cannot guarantee against rusty water because of the number of factors that are involved beyond the manufacturer's control. However, the sudden appearance of rusty water discharged from the faucet may indicate the need for service or replacement of this product.

### SYSTEM REQUIREMENTS

#### (HOT WATER TANK AND FAUCET):

- Make sure that all electrical, plumbing and connections conform to local codes.
- A standard, earthed (grounded) electrical outlet, with continuous supplied power, is required within 7 ft of the tank.
- This outlet must be fused. Fuse/circuit breaker required is 15 amp for 115 volt.
- Do not install on hot water supply lines.
- Incoming water temperature should be between 40°F (4°C) and 80°F (27°C).
- It is recommended that a dedicated control valve be installed on the cold water line supplying water to this system.
- To prevent damage or the unit from not operating properly, the incoming water pressure must be between 30PSI-70PSI (210 kPa–483kPa; 2.1 bar–4.8 bar), and the ambient (room) temperature between 40°F - 110°F (4°C–43°C).
- The use of a water filter should NOT result in the water pressure dropping below 30PSI (210 kPa).

- Do not install where water hammer conditions occur. If water hammer conditions exist, you must install a water hammer arrester.
- To protect from freezing, shut off water supply, drain water tank and tubing when temperatures are expected to drop below 40°F (4°C); see Seasonal Storage/Drainage section.
- Do not use a torch or other high temperature sources near system, plastic fittings or plastic plumbing.
- Do not install near water pipes which will be in the path of a drilling tool when selecting the position to mount the bracket.
- Mount system in such a position as to prevent it from being struck by other items used in the area of installation.
- Ensure that the location and fasteners will support the weight of the system when installed and full of water.
- Ensure all tubing and fittings are secure and free of leaks.
- Do not install using rigid piping. It is intended for use with flexible water lines (such as PEX tubing, PE tubing, PP tubing).
- Regularly inspect the system. If there are signs of water leakage, turn off the water supply and contact an authorized InSinkErator Service agent.
- Review the Uniform Plumbing Code (UPC) for other related requirements.
- A drain pan, plumbed to an appropriate drain must be used in those applications where any leakage could cause property damage. A leak detection device with water shutoff is recommended.
- For questions or concerns, please contact InSinkErator Foodservice Sales and Service at 1-800-845-8345.

\*Based on cycles of 20 seconds on/40 seconds off, incoming water temperature of 40°F (4.4°C), and a tank set point of 105°F.

## IMPORTANT SAFETY INFORMATION

### **WARNING**

WARNING indicates a hazardous situation which, if not avoided, could result in death or serious injury.

### **CAUTION**


CAUTION indicates a hazardous situation which, if not avoided, could result in minor or moderate injury.

### **NOTICE**

NOTICE is used to address practices not related to physical injury.


### **SAVE THESE INSTRUCTIONS**


- Use this water heater only for its intended use as described in this manual.
- Do not operate this product if it has been or appears to be damaged in any manner or after the product malfunctions, or is dropped. Return the complete product immediately to your retailer or dealer for inspection.
- If the supply cord is damaged, the product must be replaced in order to avoid a hazard.
- Do not connect to water supply exceeding 80°F (27°C).
- Do not connect to the water supply if the water pressure exceeds 70 PSI.

 **WARNING: Personal Injury/Property Damage.** To reduce the risk associated with hazardous voltage due to an installer drilling through existing electrical wiring in the area of installation: Do not install near electrical wiring or water pipes which may be in the path of a drilling tool when selecting the position to mount the system bracket.


**Important:** Always arrange the power cord so that it cannot come in contact with hot surfaces.

- Do not disconnect the product by pulling on the cord.
- The use of accessory attachments other than those recommended by the manufacturer may cause safety hazards.
- The recommended connection may be made to an existing cold water line with a branch terminating with a shut off valve.

 **WARNING: Electrical Shock Hazard.** Using an ungrounded (no earth ground) or improperly connected appliance can result in serious injury or death from electrical shock.

 **WARNING: Electrical Shock Hazard.** To reduce the risk of electrical shock, do not immerse or expose the product, flexible cord, or plug to rain, moisture, or any liquid or when standing in or on damp or wet surfaces. If any electrical product falls into the water, UNPLUG it immediately. **DO NOT REACH IN THE WATER.** Important: prior to reconnecting to the power supply, the product should be inspected by a qualified technician.

**This appliance must be earthed (grounded).** This water tank is equipped with a cord that has a grounding conductor and earth ground pin. The plug must be connected to an appropriate outlet that is properly installed and earthed (grounded) in accordance with all local codes and ordinances. Do not modify the plug provided with the appliance – if it will not fit the outlet, have a proper outlet installed by a qualified electrician. Check with a qualified electrician or tradesman if you are in doubt as to whether the water tank is properly earthed (grounded).

 **CAUTION:** This product is intended to be used as it was originally packaged. Do not use the system if the Faucet End Piece has been removed or replaced.

## IMPORTANT SAFETY INFORMATION

**⚠ WARNING: Personal Injury/Property Damage.** This tank is a pressurized tank. DO NOT modify this system. DO NOT connect other types of valves to the tank. Use only the InSinkErator faucet supplied. Use only parts provided. Contact an authorized InSinkErator Service agent for repairs or replacement components.

**⚠ WARNING:** To reduce the risk associated with the ingestion of contaminants: Do not use with water that is microbiologically unsafe or of unknown quality without adequate disinfection before or after the system.

A water tank, like any water heater, has a limited life and will eventually fail. To avoid possible property damage and personal injury, this water tank should be regularly examined for leakage and/or corrosion and replaced when necessary. A drain pan, plumbed to an appropriate drain must be used in those applications where any leakage could cause property damage. A leak detection device with water shutoff is recommended.

**⚠ WARNING: Fire Hazard.** To minimize possibility of fire, DO NOT store flammable items such as rags, paper or aerosol cans near the tank. DO NOT store or use petrol or other flammable vapors and liquids in the vicinity of this or any other appliance.

**⚠ WARNING: Leak Hazard.** Regularly inspect the faucet and plumbing fittings for leaks, which can cause property damage and could result in personal injury.

**⚠ NOTICE: Property Damage.** To reduce the risk associated with property damage due to water leakage or flooding, and to ensure optimal performance:

- Read and follow all instructions before installation and use of system.
- Installation and use MUST comply with all state and local plumbing codes.

**⚠ NOTICE: Property Damage.** Any water heater should be installed in such a manner that if it should leak, the resulting flow of water will not cause damage to the area in which it is installed and areas where the water could flow. National plumbing codes require a drain pan for any water heater installation. Failure to install one is the sole responsibility of owner and/or installer. Reference the latest version of the Uniform Plumbing Code (UPC) for specific details and requirements.

**⚠ NOTICE:** The maximum working pressure of 150 PSI refers to the rating of the temperature and pressure relief valve. The pressure of the water entering the water heater must be less than 70 PSI.

**⚠ NOTICE: Property Damage.** To avoid water damage, replace any loose or split tubing. Periodically inspect the unit for any sign of leakage and immediately remove from service any unit suspected of leaking.

**⚠ NOTICE:** T&P valves are typically designed and manufactured to relieve pressure at 150PSI and temperature at 210°F (98.9°C). ASME, ANSI and CSA (AGA) approved relief valves protect the water heater from excess pressures and temperatures by discharging water.

When water is heated it expands. The extra volume created by this expansion has to go somewhere or pressure will dramatically increase, such as when water is heated in a closed system.

In normal operation of the water heater and T&P valve, no water should be discharged from the valve. A relief valve functions by discharging water, so it is essential that a discharge line be piped from the valve in order to carry the overflow to a safe place of disposal. This discharge line must be the same size as the valve outlet and must pitch downward from the valve. Discharge may indicate that an unsafe temperature or pressure condition exists which requires immediate attention by a qualified service technician or licensed plumbing contractor.

The T&P valve lever MUST be operated AT LEAST ONCE A YEAR to ensure that the water-ways are clear. Certain naturally occurring mineral deposits may adhere to the valve, rendering it inoperative. When manually operating the lever, water will discharge and precautions must be taken to avoid contact with hot water and to avoid water damage. BEFORE operating lever, check to see that a discharge line is connected to this valve directing the flow of hot water from the valve to a proper place of disposal, otherwise personal injury may result. If no water flows, valve is inoperative. TURN OFF THE WATER HEATER AND CALL A PLUMBER IMMEDIATELY.

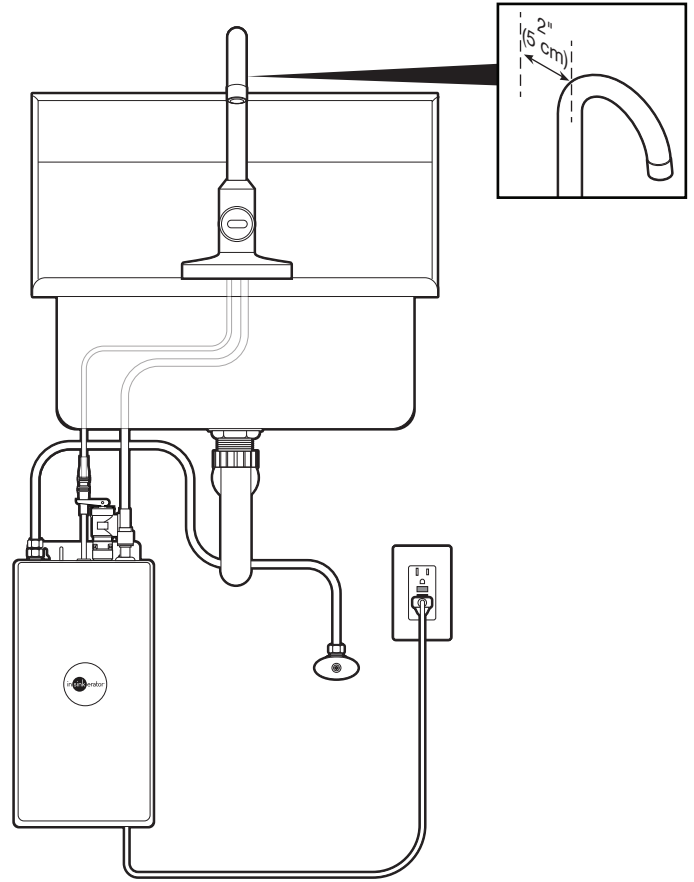
## Overview of Complete Set-up

Figure 1 – Typical Installation Shown

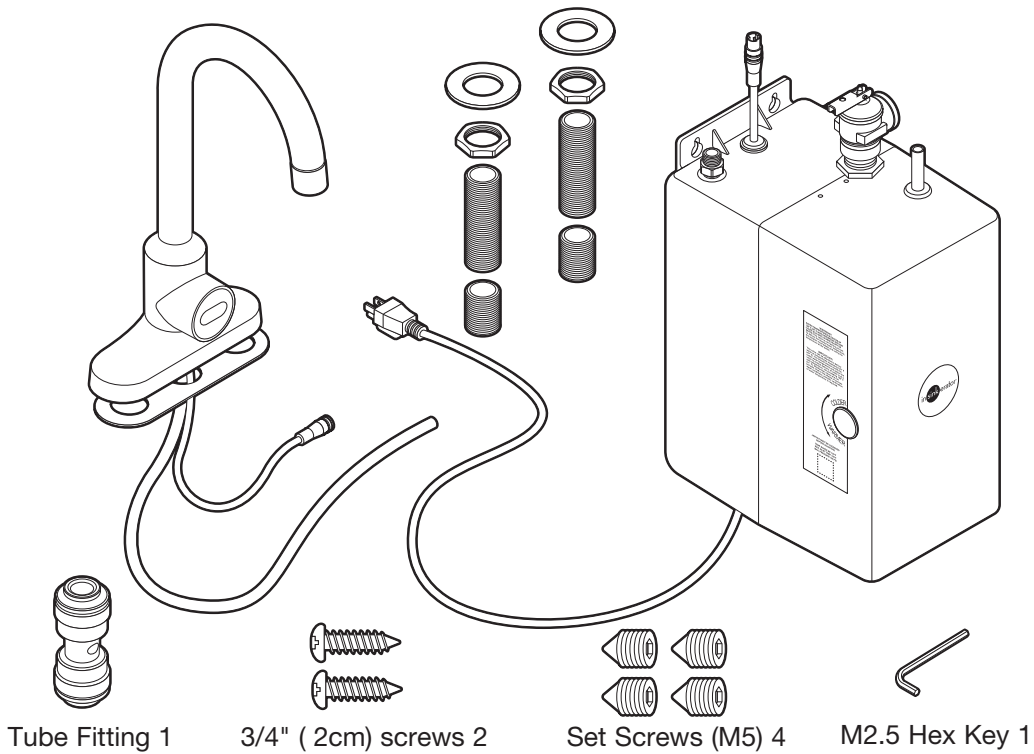
**Note:** Tank must be located within 16" (41 cm) of faucet and within 84" (213 cm) or less of a standard dedicated 115-volt GFCI outlet. DO NOT extend plumbing or electrical lines.

### NOTICE

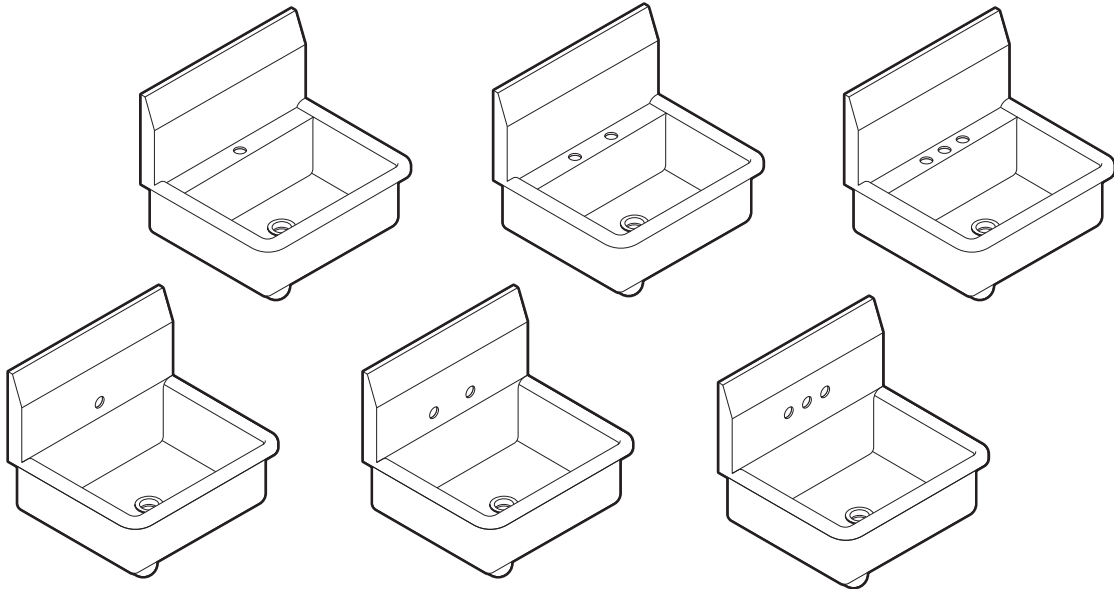
Ensure the incoming water line is connected, shutoff valve is open, and the system is ready for use prior to plugging in tank.



## Components In This Package

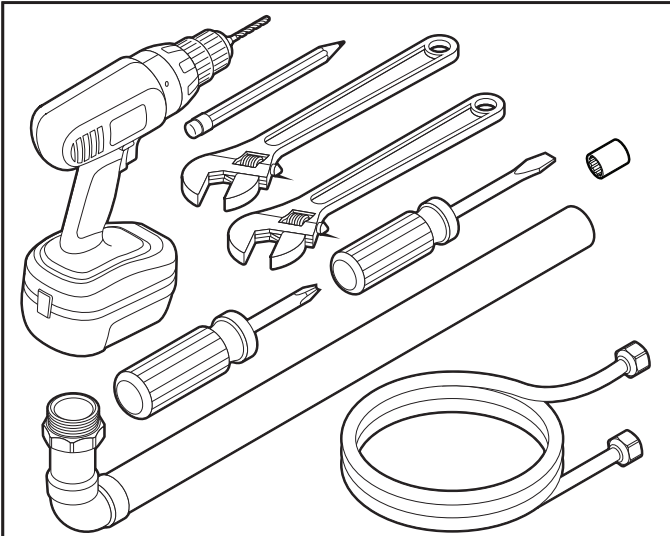


## Sink Mount Configurations (4" Centers)



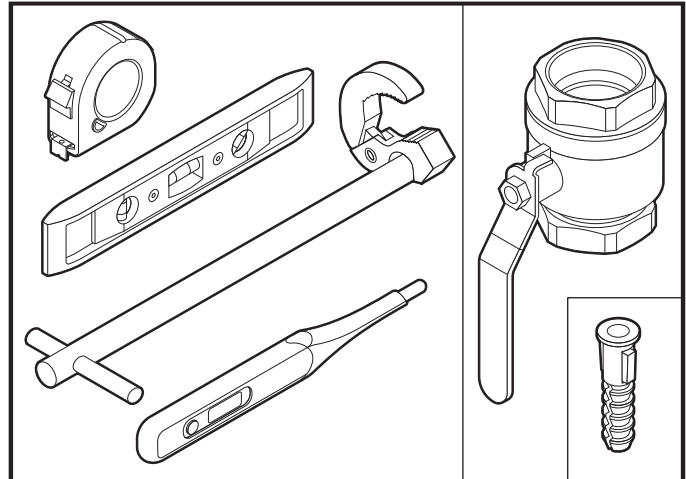
### Required Tools/Materials

#### SUPPLIES NEEDED:



- Drill
- Pencil
- Adjustable Wrenches (2)
- Screw Drivers
- Discharge Pipe
- Water Supply Hose
- 5/8" Socket

#### SUPPLIES YOU MAY NEED:



- Tape Measure
- Level
- Basin Nut Wrench
- Thermometer
- Shutoff Valve
- Anchors

## How To Use This Instruction Manual

These instructions are separated into main sections, indicated by numbers, and subsections, indicated by capital letters. The manual is setup this way to allow you to take a break at any point after completing a section or subsection without affecting the installation process.

- 1** Provides a step-by-step narrative describing the installation step, with tick boxes that can be marked as you progress through the installation.
- 2** Contains simple illustrations that provide visual instruction to support the narrative.
- 3** WARNINGS, CAUTIONS and NOTICES that will require your attention during the step.

### **⚠ WARNING**

#### **ELECTRIC SHOCK HAZARD**

Appliance must be grounded.

## Installation

Proper installation should take 2-4 hours.

### 1. PREPARATION

**A**

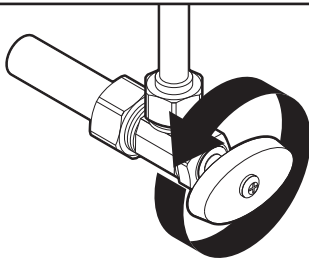
**Required minimum from center of hole to wall**  
2" (51 mm)

**Maximum counter thickness (depth)**  
5/8" (16 mm)

**Required hole size (diameter)**  
1"–1½" (25–38 mm)

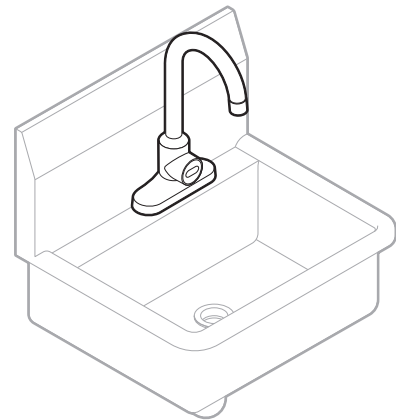
- Identify locations for the faucet and tank.
- Check to make sure counter is not too thick.
- Make sure there is a GFCI outlet under the sink.  
**The wall outlet for your faucet must have power supplied to it continuously and must be fused.**
- If drilling a hole into a stainless steel sink or counter top, you can cut a mounting hole for the faucet with a hole saw for stainless steel, or you can use a hole punch. **Consult a professional before drilling into a surface other than stainless steel.**

**B**

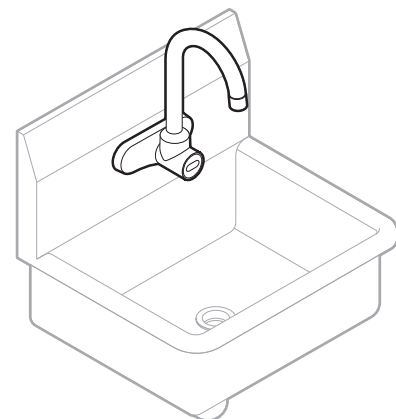


Turn off water supply.

**C**



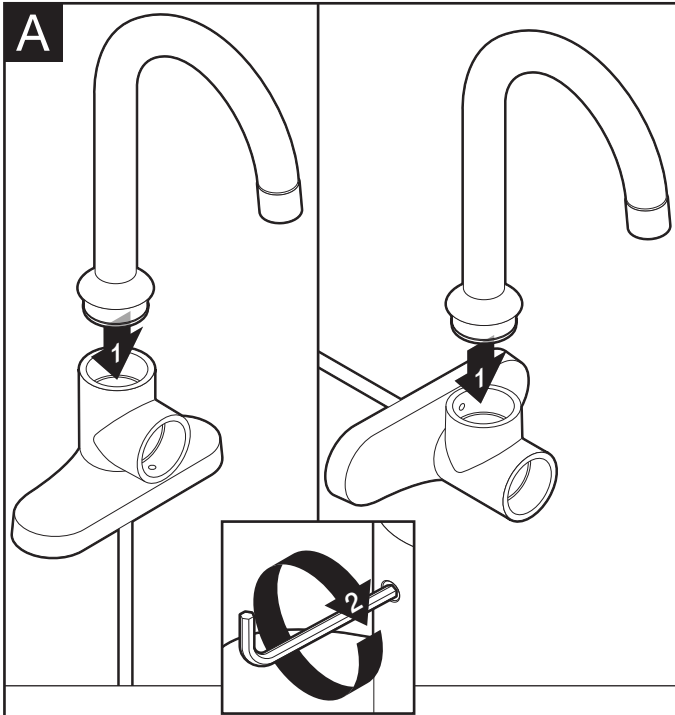
Decide on deck mount...



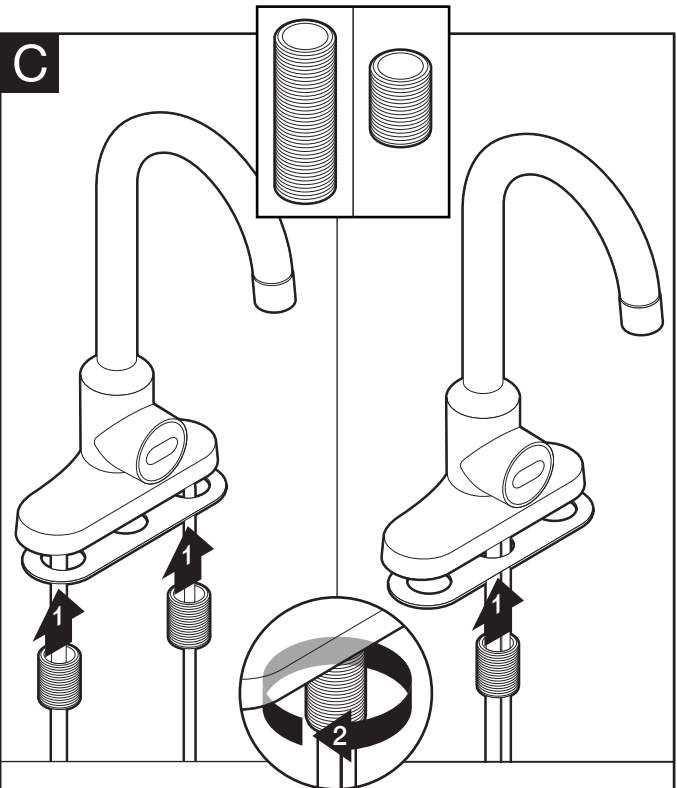
or splash mount configuration.



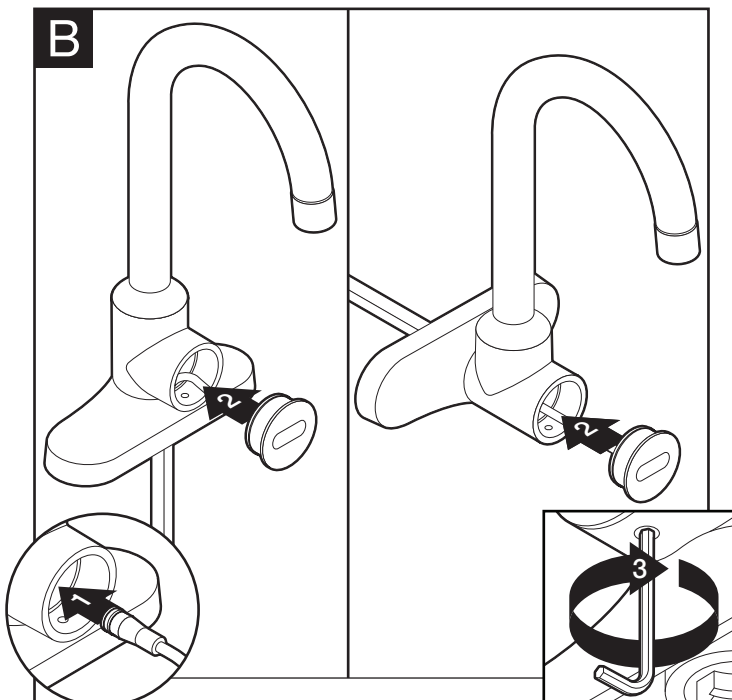
## 2. ASSEMBLY OF FAUCET



Install spout into faucet base and tighten set screw to secure.



Install threaded sleeve(s) into bottom of faucet. Longer threaded sleeves are provided for countertop applications.



After inserting sensor connection wire, install sensor into faucet base. Tighten set screw to secure.



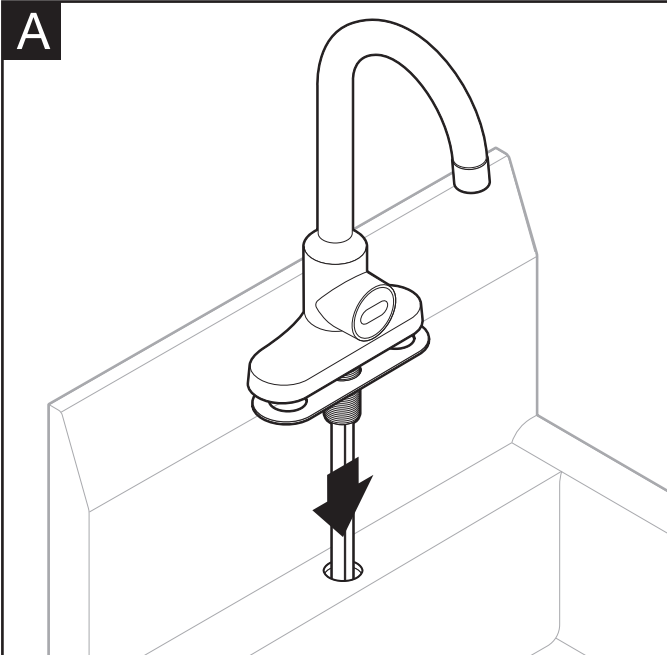
### 3. INSTALLING THE FAUCET

#### NOTICE

##### PROPERTY DAMAGE

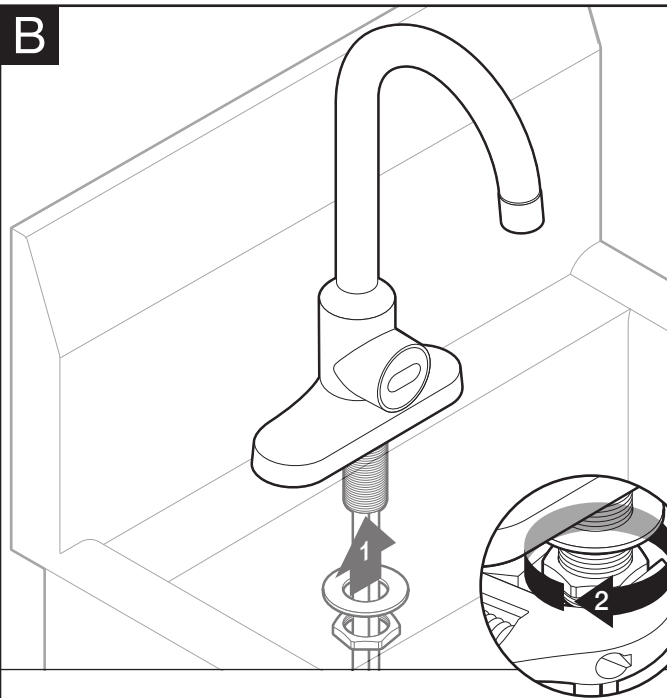
Do not pinch wires or tubing.

A



Feed hose, sensor wire and threaded sleeve(s) into hole until faucet rests on deck/splash.

B



From underneath or behind sink, install washer(s) and large nut(s) onto threaded sleeve(s). Using an adjustable wrench to secure.

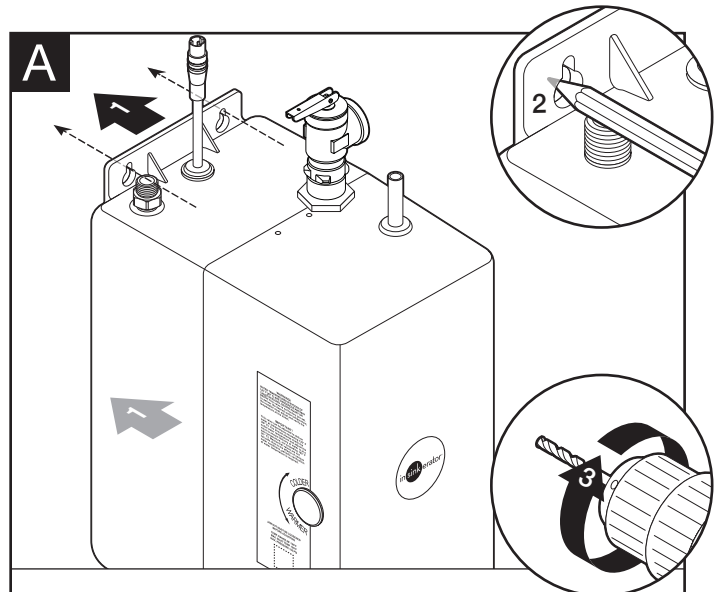
### 4. MOUNTING THE TANK

#### NOTICE

##### PROPERTY DAMAGE

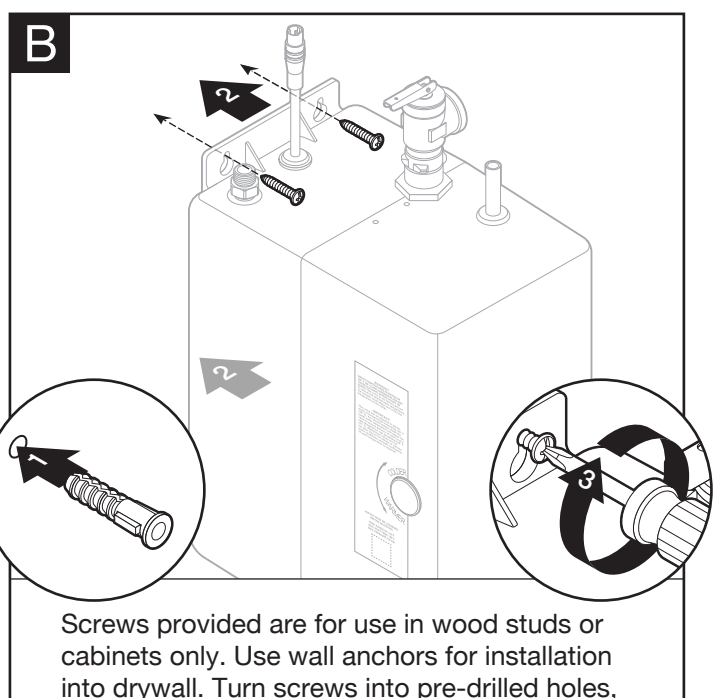
Tank must be located within 16" (41 cm) of faucet and 84" (213 cm) or less of a GFCI outlet, to accommodate the supplied 7' cord. DO NOT extend plumbing or electrical lines.

A



From underneath the sink, place tank against the wall and mark hole locations. Pre-drill 1/8" (3mm) pilot holes at marks.

B



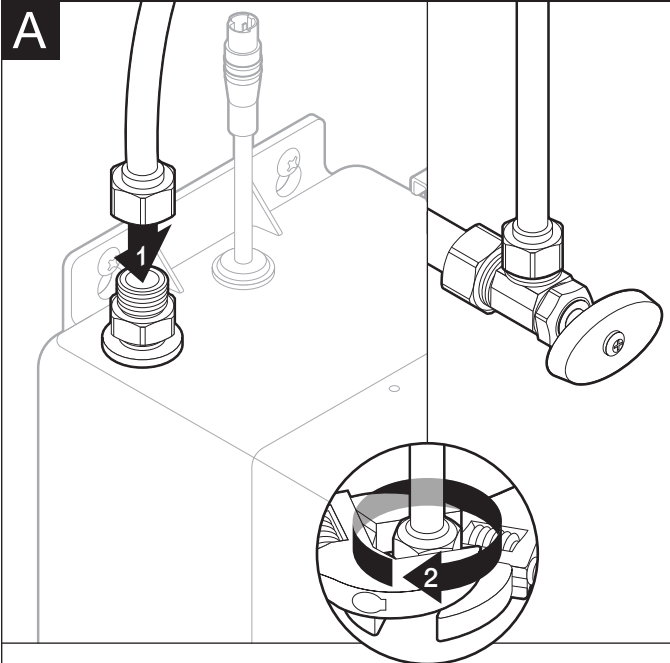
Screws provided are for use in wood studs or cabinets only. Use wall anchors for installation into drywall. Turn screws into pre-drilled holes, leaving 1/4" (6 mm) exposed. Hang the tank on the screws. Tighten the screws with only 1/2 turn clockwise.

## 5. CONNECT FAUCET TO TANK

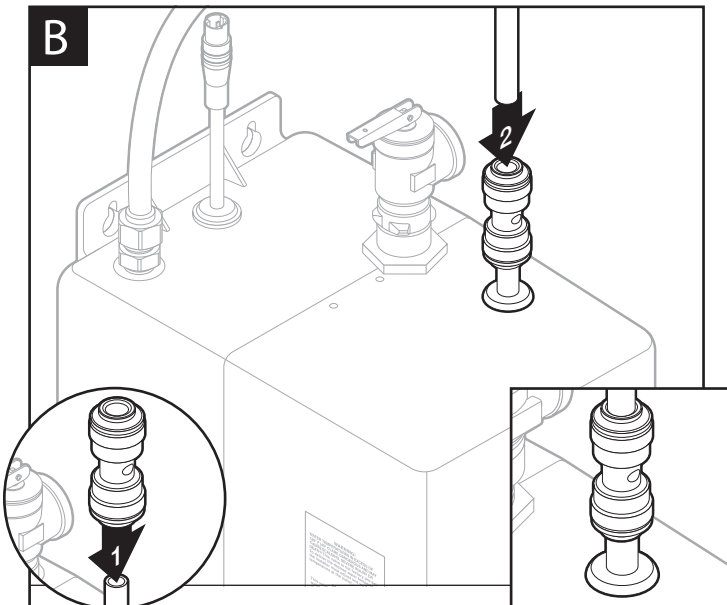
### NOTICE

#### PROPERTY DAMAGE

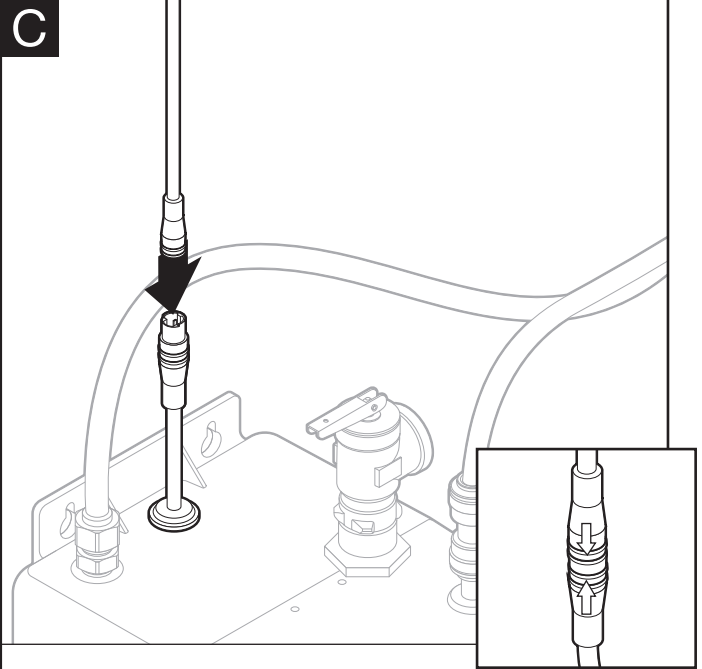
- Pinched or blocked water lines may cause damage to the tank.
- Check to make sure tubes are connected properly and are pushed down as far as possible.



Connect cold water hose to tank fitting. Secure connection using a wrench while tightening the hose.

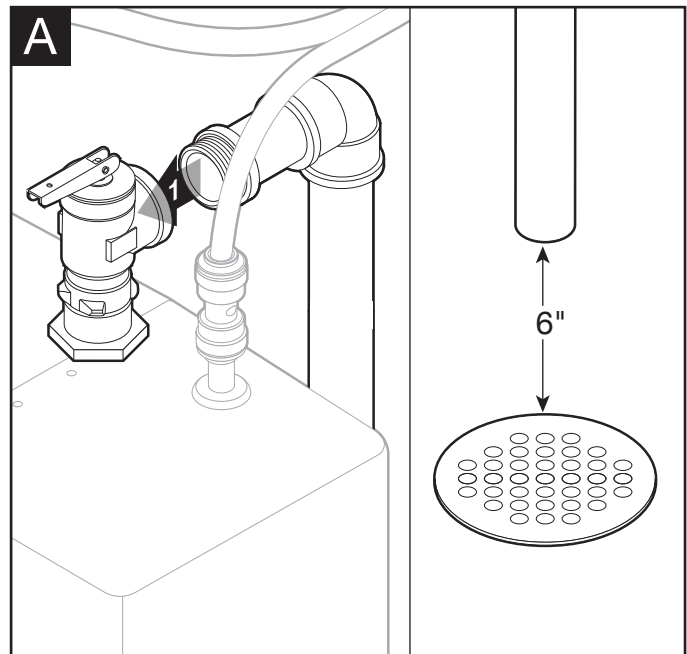


Insert tube fitting onto tube on top of tank. Insert faucet hose into top of tube fitting. Pull on connections to insure tubes are fully seated. Tube should insert approximately 5/8".



Connect sensor from faucet to sensor from tank. Be sure to align arrows on connectors.

## 6. CONNECT DRAINAGE PIPE



Install a 3/4" inside diameter discharge pipe to the T&P Valve (sloped for proper drainage). The discharge pipe should be terminated within 6" from the floor at a suitable place for disposal.

## 7. FINAL WATER CONNECTION

### NOTICE

#### PROPERTY DAMAGE

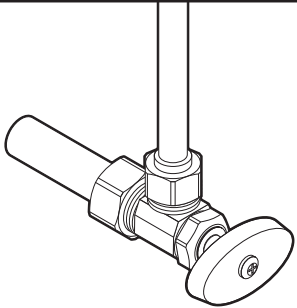
Join remaining tube to cold water supply only.

### ⚠ WARNING

#### SCALDING HAZARD

Do NOT connect to water supply exceeding 80°F (27°C).

A



Make sure the water hose is properly connected to the cold water source with valve.

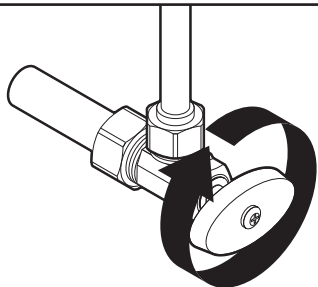
## 8. FINAL INSTALLATION

### ⚠ WARNING

#### SCALDING HAZARD

Steam and hot water can spit forcefully from the T&P valve.

A



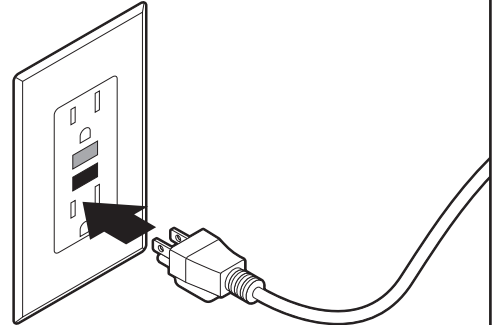
Turn on water supply and check for any leaks at the fittings.

### ⚠ WARNING

#### FIRE HAZARD

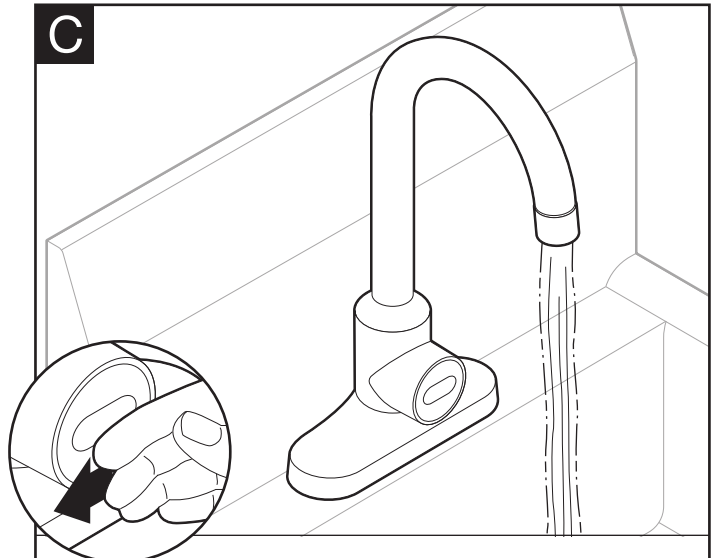
A GFCI outlet within 84" (213 cm) of tank is required under the sink. Do not use an extension cord set with the dispenser.

B



Connect tank power cord to GFCI outlet.

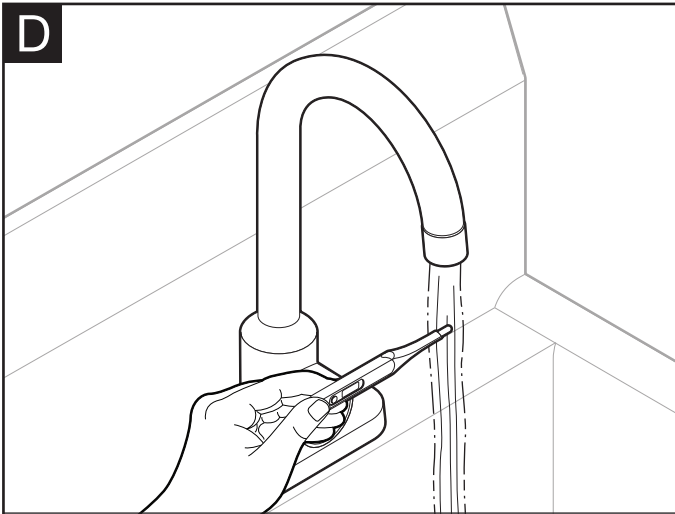
C



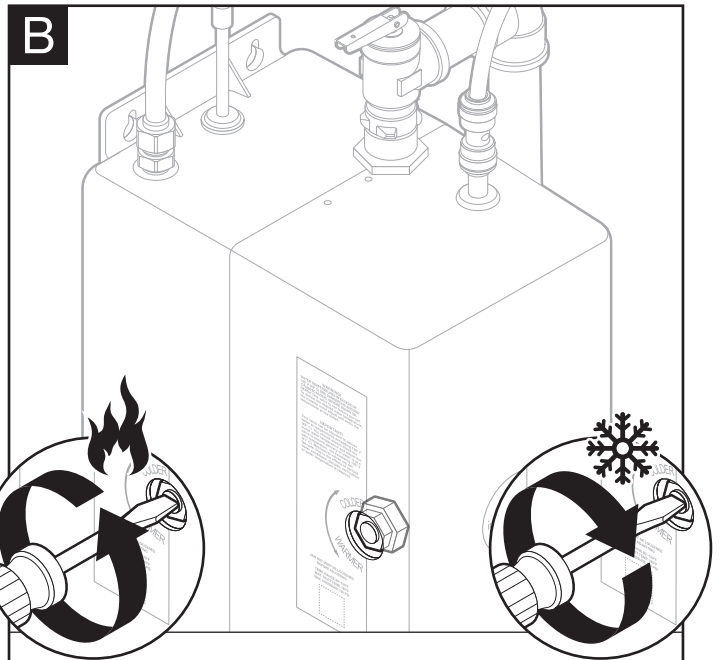
Activate the faucet immediately to allow the tank to fill for 2 minutes.

### ⚠ WARNING

Once plugged in, the tank begins heating after 5 minutes and must contain water to prevent damage.



This valve is not factory pre-set. Check the water temperature with a thermometer. A temperature setpoint of 100°F (38°C) is recommended. The setpoint should not exceed 105°F (41°F). If the water temperature is not at the desired temperature, follow steps in section 9 to adjust the temperature. Failure to verify the temperature may cause scalding or severe injury.



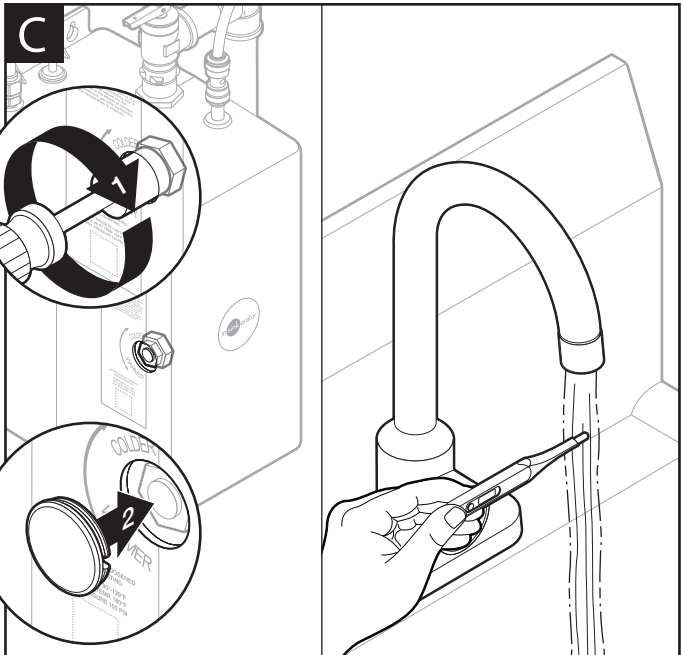
If needed, turn temperature adjustment screw counterclockwise for hotter or clockwise for colder outlet temperature.

## 9. ADJUSTING THE THERMOSTAT

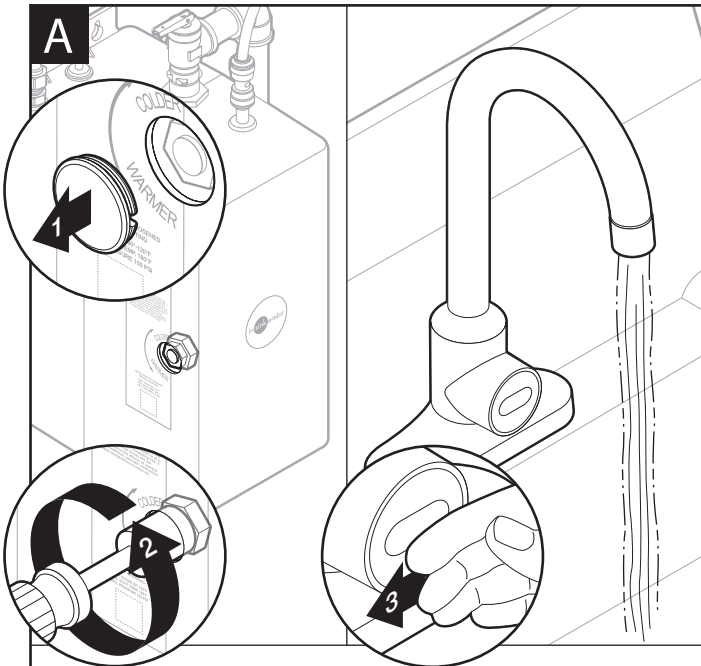
### ⚠ WARNING

#### SCALDING HAZARD

The adjustable temperature range of the mixing valve is 80° to 120°F. Do not allow output water temperature to exceed 105°F. Failure to verify the temperature may cause scalding or severe injury.

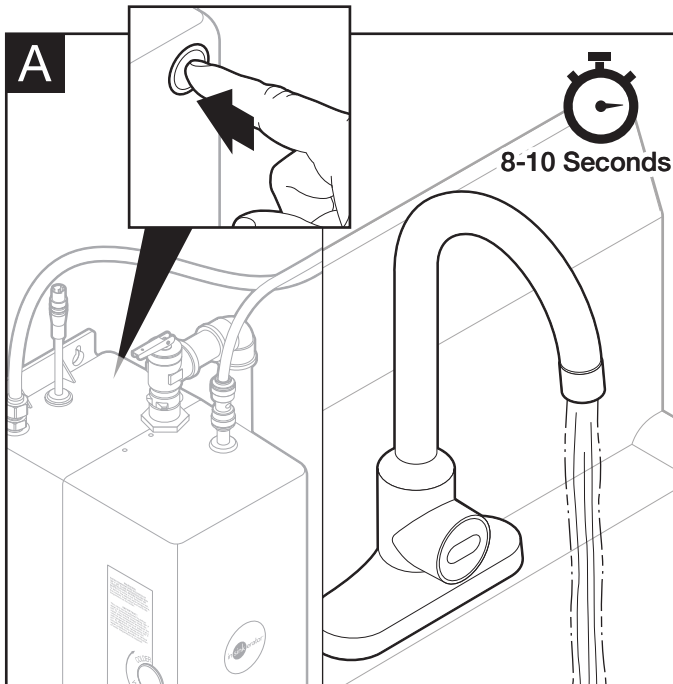


Tighten locknut to prevent accidental or unauthorized temperature adjustment. Replace tank plug. Wait a few minutes for tank to re-heat, and re-check temperature.

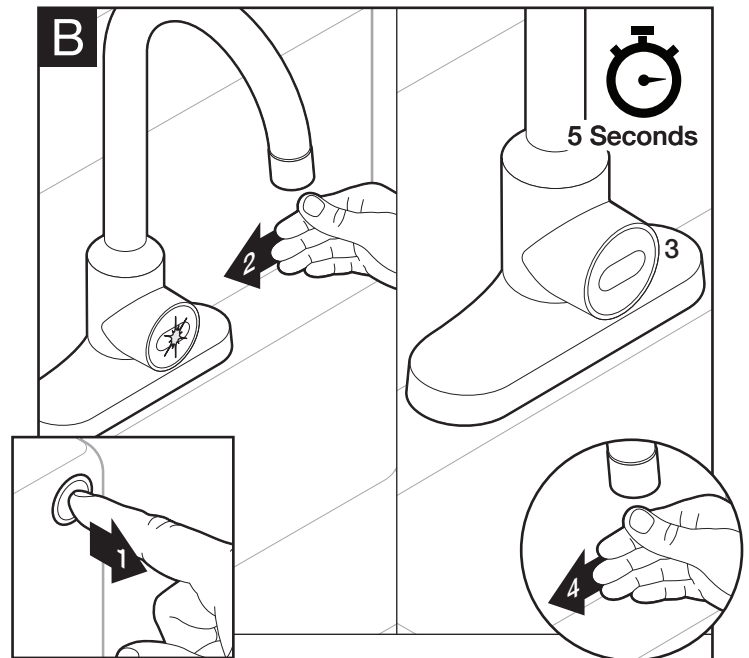


Remove tank plug and loosen locknut. Turn on fixture and run water for at least 2 minutes to allow water temperature to stabilize.

## 10. SENSOR CALIBRATION



If the range of the motion sensor is not desirable, press and hold the calibration button on the side of tank (water will run for 8-10 seconds then stop).



Release button and place a hand in the desired sensor activation location. Wait for 5 seconds until the red LED on the sensor turns off. Test the new activation location by placing a hand in front of the sensor.

## Care & Use

### **⚠ CAUTION**

#### ***ELECTRIC SHOCK HAZARD***

To prevent electrical shock, disconnect power before servicing unit. Use only a GFCI outlet.

#### ***PROPERTY DAMAGE***

- Regularly inspect the unit for any signs of leakage. If there are signs of water damage, immediately remove the unit from service.
- To avoid water damage from leakage, replace all cut, loose or split tubing.
- A drain pan, plumbed to an appropriate drain must be used in those applications where any leakage could cause property damage. A leak detection device with water shutoff is recommended.

#### ***SEASONAL STORAGE / DRAINAGE***

- Disconnect power from unit.
- Disconnect tubes from the tank.
- Water inside tank is 145°F (63°C). Allow water in tank to cool.
- Open T&P valve on tank.
- Unhook tank from wall.
- Hold tank upside down and drain water into the sink.

#### ***RE-CONNECTING AFTER STORAGE***

- Towel dry any water drippings from the tank area.
- Reinstall tank to the wall and reconnect the tubes.
- Ensure that the T&P valve is closed.
- Turn on cold water supply at valve, plug in power cord, then activate faucet for 2 minutes until water flows from the spout. There is a 5 minute startup delay before the heater will turn on. The heater will run through the startup process and will take approximately 10 additional minutes for the water to reach temperature.

#### ***CLEANING THE FAUCET AND TANK***

- Only use mild cleaners to clean the faucet and outside of the tank.
- Cleaners with acids, abrasives, alkaline or organic solvents will result in deterioration of the plastic components and void the warranty.

#### ***PERSONAL INJURY***

- Regularly check for signs of corrosion by examining the appearance of the dispensed water.
- If there is any discoloration or rusty appearance, unplug and drain unit as described in the Seasonal Storage/Drainage section on this page of the manual.
- If the water discoloration remains after draining and refilling unit, discontinue use and contact an authorized InSinkErator service agent.

### **⚠ CAUTION**

#### ***TEMPERATURE VERIFICATION***

This valve can be adjusted to deliver water temperatures exceeding 120°F (49°C). You should always check the outlet water temperature and adjust the valve to ensure delivery of water is at a safe temperature, not exceeding 105°F (41°C). Mechanical valves are not fail-safe. Due to the effects of various water conditions, periodic verification of water temperature is required.

## Troubleshooting Guide



Please read this Troubleshooting Guide.

PROBLEM	POSSIBLE CAUSE	SOLUTION
Water or steam spits from the T&P valve.	<ul style="list-style-type: none"> <li>• Water pressure inside of tank is too high.</li> <li>• Temperature inside of tank is too high.</li> <li>• T&amp;P valve is faulty.</li> </ul>	<ul style="list-style-type: none"> <li>• Reduce incoming water pressure by adding a pressure reducer.</li> <li>• Unplug unit, discontinue use and contact an authorized InSinkErator service agent.</li> <li>• Replace T&amp;P valve.</li> </ul>
No warm water.	<ul style="list-style-type: none"> <li>• The unit is unplugged.</li> <li>• The electric outlet is inoperative.</li> <li>• System is in start-up mode.</li> </ul>	<ul style="list-style-type: none"> <li>• Make sure the unit is connected to a GFCI outlet.</li> <li>• Make sure the circuit breaker or fuses are functioning properly.</li> <li>• Check that the outlet is not switched off.</li> <li>• Allow system to heat water (there is a 5 minute startup delay before the heater will turn on. The heater will run through the startup process and will take approximately 10 additional minutes for the water to reach temperature).</li> </ul>
Water is too hot or not warm enough.	<ul style="list-style-type: none"> <li>• TMV is not adjusted to your needs.</li> </ul>	<ul style="list-style-type: none"> <li>• Adjust TMV and re-measure output water temperature as described in the Adjusting the Thermostat section on page 12 of this manual.</li> </ul>
Undesired output stream.	<ul style="list-style-type: none"> <li>• Debris in the end piece.</li> </ul>	<ul style="list-style-type: none"> <li>• Unscrew spout end piece and clean out any debris.</li> </ul>
Water is dripping from the spout.	<ul style="list-style-type: none"> <li>• Debris build up on internal components.</li> </ul>	<ul style="list-style-type: none"> <li>• Unplug unit, discontinue use and contact an authorized InSinkErator service agent.</li> </ul>
Water discoloration/rusty appearance.	<ul style="list-style-type: none"> <li>• Corrosion of unit.</li> </ul>	<ul style="list-style-type: none"> <li>• Unplug and drain unit as described in the Seasonal Storage/Drainage Section on page 14 of this manual. If the water discoloration remains after draining and refilling unit, discontinue use and contact an authorized InSinkErator service agent.</li> </ul>
Motion doesn't activate water.	<ul style="list-style-type: none"> <li>• Sensor lens is dirty.</li> <li>• Unit is not plugged in.</li> <li>• Faucet sensor cable is not plugged in.</li> <li>• Sensor range.</li> </ul>	<ul style="list-style-type: none"> <li>• Clean sensor lens.</li> <li>• Make sure the unit is connected.</li> <li>• Make sure the circuit breaker or fuses are functioning properly.</li> <li>• Check that the outlet is not switched off.</li> <li>• Disconnect, inspect, and reconnect sensor cable located on top of tank.</li> <li>• Perform sensor calibration steps as described in the Sensor Calibration section on page 13 of this manual.</li> </ul>

**If you are still experiencing trouble call 1-800-845-8345.**





## Limited Warranty

InSinkErator® (“InSinkErator” or “Manufacturer” or “we” or “our” or “us”) warrants to the original purchaser only (“Customer” or “you” or “your”), subject to the exclusions below, that your InSinkErator® (the “InSinkErator Product”) will be free from defects in material and workmanship for one year from the original date of purchase (the “Warranty Period”). This limited warranty terminates if the original purchaser transfers the InSinkErator Product to any other person or entity.

### What is Covered

This limited warranty includes repair or replacement of your InSinkErator Product, accessories if included in the original InSinkErator Product package, and all replacement parts and labor costs if provided by an authorized InSinkErator service representative.

### What is not Covered

This limited warranty does not extend to and expressly excludes:

- Losses or damages or the inability to operate your InSinkErator Product resulting from conditions beyond the Manufacturer’s control including, without limitation, accident, alteration, misuse, abuse, neglect, or negligence (other than Manufacturer’s).
- Wear and tear expected to occur during the normal course of use, including without limitation, cosmetic rust, scratches, dents or comparable and reasonably expected losses or damages.
- Failure to install, maintain, assemble, or mount the InSinkErator Product in accordance with Manufacturer’s instructions or local electrical and plumbing codes, faulty or improper electrical installation, faulty or improper plumbing installation, clogged drain lines, or an improperly sized unit (as specified by InSinkErator).

### What we will do to Correct Problems

To file a warranty claim during the Warranty Period, you may call Toll Free 1-800-845-8345 for the nearest InSinkErator Authorized Service Agency or to reach Technical Support, or you may visit our website at [www.insinkerator.com](http://www.insinkerator.com).

The following information must be provided as part of your warranty claim: your name, address, phone number, your InSinkErator Product model and serial number. You will be required to submit supporting documentation of the date of purchase.

Manufacturer or its authorized service representative will determine, in its sole and absolute discretion, if your InSinkErator Product is covered under this limited warranty. Only an authorized InSinkErator service representative may provide warranty service. InSinkErator is not responsible for warranty claims arising from work performed on your InSinkErator Product by anyone other than an authorized InSinkErator service representative.

If a covered claim is made during the Warranty Period, Manufacturer will, through its authorized service representative, and at Manufacturer’s or its authorized service representative’s sole discretion, either repair or replace your InSinkErator Product. If your InSinkErator Product is replaced, the warranty on the replacement InSinkErator Product will be limited to the unexpired term remaining in the original Warranty Period. **YOUR SOLE AND EXCLUSIVE REMEDY UNDER THIS LIMITED WARRANTY SHALL BE LIMITED TO REPAIR OR REPLACEMENT OF THE INSINKERATOR PRODUCT.** This limited warranty is valid only in the United States and applies only when the InSinkErator Product is used in the country in which it was purchased. If outside the 50 United States, contact your authorized InSinkErator dealer to determine whether any warranty applies.

### No Other Express Warranty Applies

**THE LIMITED WARRANTIES PROVIDED ABOVE ARE THE SOLE AND EXCLUSIVE WARRANTIES PROVIDED BY MANUFACTURER TO THE ORIGINAL PURCHASER, AND ARE IN LIEU OF ALL OTHER WARRANTIES, WRITTEN OR ORAL, EXPRESS OR IMPLIED, WHETHER ARISING BY OPERATION OF LAW OR OTHERWISE, INCLUDING, WITHOUT LIMITATION, WARRANTIES OF MERCHANTABILITY OR FITNESS FOR A PARTICULAR PURPOSE, WHETHER OR NOT THE PURPOSE HAS BEEN DISCLOSED AND WHETHER OR NOT THE INSINKERATOR PRODUCT HAS BEEN SPECIFICALLY DESIGNED OR MANUFACTURED FOR YOUR USE OR PURPOSE.**

### Limitation of Liability

**TO THE EXTENT PERMITTED BY LAW, IN NO EVENT SHALL MANUFACTURER OR ITS AUTHORIZED SERVICE REPRESENTATIVES BE LIABLE FOR ANY INCIDENTAL, SPECIAL, INDIRECT, OR CONSEQUENTIAL DAMAGES, INCLUDING ANY ECONOMIC LOSS, WHETHER RESULTING FROM NONPERFORMANCE, USE, MISUSE OR INABILITY TO USE THE INSINKERATOR PRODUCT OR THE MANUFACTURER’S OR ITS AUTHORIZED SERVICE REPRESENTATIVE’S NEGLIGENCE. MANUFACTURER SHALL NOT BE LIABLE FOR DAMAGES CAUSED BY DELAY IN PERFORMANCE AND IN NO EVENT, REGARDLESS OF THE FORM OF THE CLAIM OR CAUSE OF ACTION (WHETHER BASED IN CONTRACT, INFRINGEMENT, NEGLIGENCE, STRICT LIABILITY, OTHER TORT OR OTHERWISE), SHALL MANUFACTURER’S LIABILITY TO YOU EXCEED THE PRICE PAID BY THE ORIGINAL OWNER FOR THE INSINKERATOR PRODUCT.**

The term “consequential damages” shall include, but not be limited to, loss of anticipated profits, business interruption, loss of use or revenue, cost of capital or loss or damage to property or equipment.

Some states do not allow the exclusion or limitation of incidental or consequential damages, so the above limitation may not apply to you. This warranty gives you specific legal rights and you may also have other rights which vary from state to state.