



# ACCESSORIES



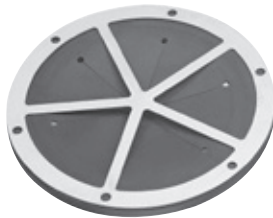
## ADJUSTABLE SUPPORT LEGS

- Recommended for all disposer installations & mountings
- Sold in sets of two legs
- Two support legs can be added to small disposer orders
- Two support legs included with Medium disposers, but not installed
- Three support legs are included and installed on Large disposers.
- P/N 11757C



## FLANGE FOOT

- Provides secure floor mounting option for commercial disposers
- Use anywhere extra stability or security is a concern
- Flange foot is sold individually and includes one set screw
- Order two feet for medium size units and three feet for large units
- P/N 14394



## THROAT GUARD

- Throat Guard mounts at the throat opening of the disposer
- Keeps hands safely away from disposer grind chamber
- Cannot be removed while disposer is installed on sink or trough
- Fits any disposer with a standard 6<sup>5</sup>/<sub>8</sub>" throat opening
- Includes gasket and mounting bolts
- P/N 13620



## TAMPER-PROOF CONTROL PANEL SCREWS

- Replaces standard closure screws on disposer control panels
- Eliminates unauthorized entry into control panel for safety and security
- For use with CC-101, CC-202, AS-101, WX-101 and PR-101 disposer control panels
- Includes four control panel replacement screws and matching wrench
- P/N 13946



## MAGNETIC SILVER SAVER

- Mounts to any trough system
- To order, specify part# 13983
- One Trough Magnetic Silver Saver approximately 18 inches from disposer hole is recommended. Additional magnets along length of trough are optional.

Our products appear on *The KCL CADalog*  
 More information is available from  
**Kochman Consultants, Ltd.** at [www.kclcad.com](http://www.kclcad.com).



1250 International Dr.  
 Mount Pleasant, WI 53177  
 TEL: 800-845-8345



[www.insinkerator.com/foodservice](http://www.insinkerator.com/foodservice)